

ESP

intelligent

ACD-EN

Addressable Multi Sensor with CO detection

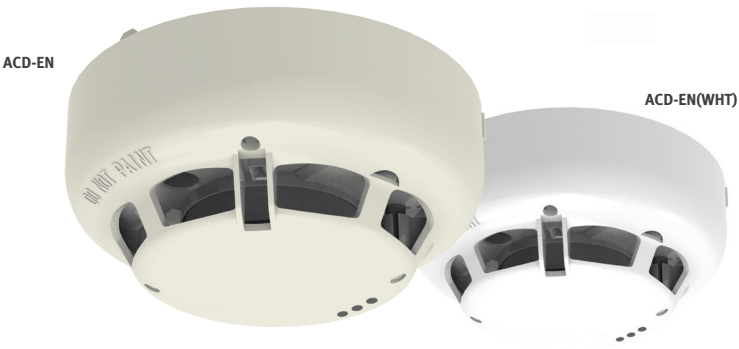
Features

- ▶ Low profile
- ▶ Heat , Optical and CO sensing elements
- ▶ CO Alarm (COHb) facility
- ▶ 10 year CO sensor life
- ▶ Programmable fire threshold level
- ▶ RI & LED controllable separately if required\*1
- ▶ 2 colour LED (Polling: Green, Fire: RED)
- ▶ Multiple modes

Description

An addressable loop-powered multi-sensor, with smoke, heat and CO sensing elements. The unit offers 24 different modes of operation\*1 and seamlessly matches the other sensors in the ESP Range. The CO sensing element can be used to detect smoke as well as life-threatening CO levels (acting as a CO alarm).

Note: Control Panel compatibility required



Specification		
Supply voltage	Operating voltage	17 – 41 V
	Loop pulse voltage	7 – 9 V
Current consumption (loop)	Quiescent	410 µA(typ)*2
	Loop current (when polled)	22 mA±20%*2
	Remote Indicator	8.0 mA±20%*2
	LED Current	9.1 mA*2
	Surge current	40 mA (for 50 ms)
Compatible bases	YBN-R/3, YBO-R/SCI, YBN-R/3(SCI), YBO-BS, YBO-BSB, YBO-BSB2	
Operating temperature range*3	-10°C - +50°C	
Installation temperature range	-20°C - +50°C	
Storage temperature range	-20°C - +50°C	
Relative humidity	<95% Rh at 40°C   <80% Rh at 50°C	
Dimensions	100mm diameter x 45mm (Without Base)	
Case material	Polycarbonate (Outer Cover) / PC/PS-GF (Terminal plate)	
Colour	Ivory (ACD-EN), White (ACD-EN(wht))	
LPCB Approvals	EN 54-5:2000 + A1:2002, EN 54-7:2000 +A1:2002 + A2:2006, EN 54-26: 2015 EN 54-29: 2015, EN 54-30: 2015, EN 54-31: 2015, CEA 4021:2003	
Weight (without Base)	105g	

Note: This sensor doesn’t support sleep mode.  
\*1 Panel compatibility dependant. \*2 Currents are cumulative. \*3 Operating temperature complies with standard sensitivity.

Ordering Codes

Product	Part Number
Addressable Multi Sensor with CO detection - Ivory Case	ACD-EN
Addressable Multi Sensor with CO detection - White Case	ACD-EN(WHT)