

Resetable Switch Call Point Installation Manual

※ Features

- 1.Resetable design,obvious indicators around the edges of the unit.
- 2.Press the pressing plate to enable the output function.
- 3.Pressing plate with status (green and red) shown.
- 4.Reversionary key with non-slip design.
- 5.Input power range from DC12-24V to connect with all types of fire alarm system.
- 6.Built-in buzzer status to set as silent, interval wailing or continuous wailing

Volume is adjustable.

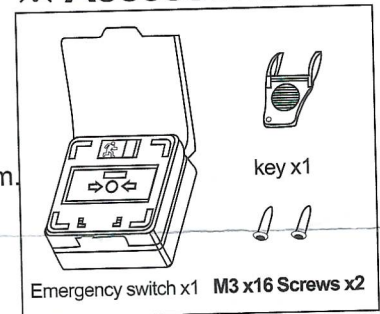
- 7.Easy to assemble, outer case without screws, 3 set of output points to connect other equipment, embedded or surface installations to select.

Note: only has output point function.

※ Specifications

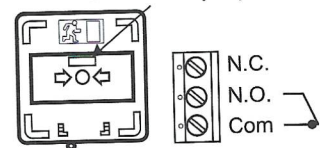
| Item | Parameters | | Note |
|-------------------|---|---|------|
| Power supply | DC 12V~DC 24V | × | ±5 % |
| Operation current | DC 12V/18mA(Standby)/75mA(Operation) | × | ±5 % |
| | DC 24V/11mA(Standby)/41mA(Operation) | × | ±5 % |
| Buzzer | Set as silent,interval wailing or continuous wailing | × | |
| Indicator | Dual-color (red and green). Red indicator to set blinking , off or on. | × | |
| Output | N.O. N.C.& COM.Output (Maximum load of 125V/3A) | | |
| Weight | SCP-100:192g/SCP-110:208g | | |
| Dimensions | 90mm(L)x93mm(W)x45mm(H) | | |
| Material | ABS,PC(transparent part) | | |

※ Accessories



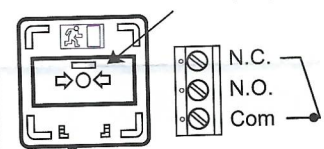
【Standby】

Status display:Green

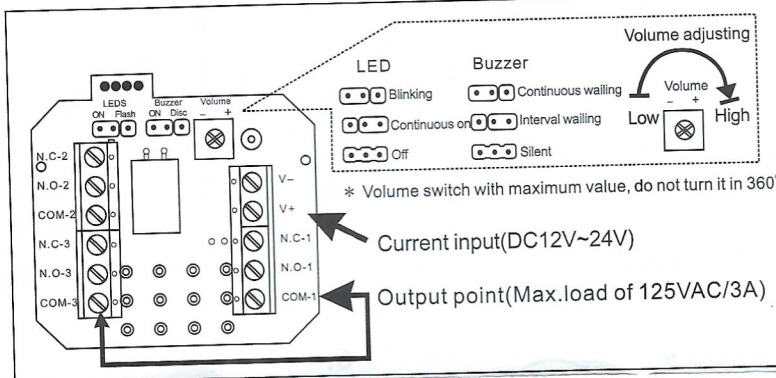


【Operation】

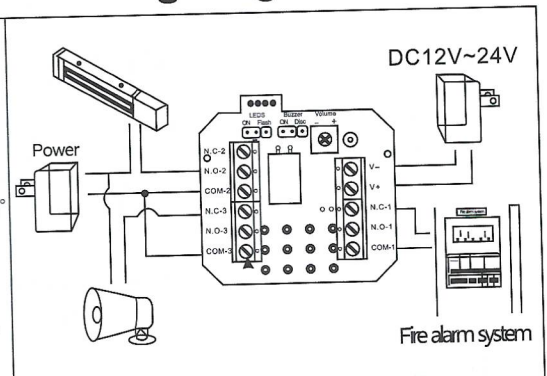
Status display:Red



※ Connections

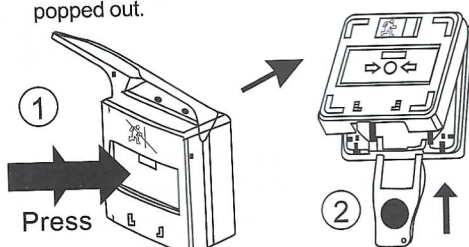


※ Wiring Diagram

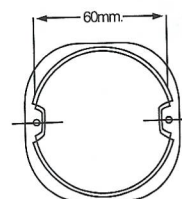


※ Attention before installation

⚠ Please press the pressing plate to make sure the states turns red before opening the front and middle covers in order to prevent the spring being popped out.



▲ Fixed holes embedded box as 60mm.



▲ Restricted terminal's aperture shown below.

